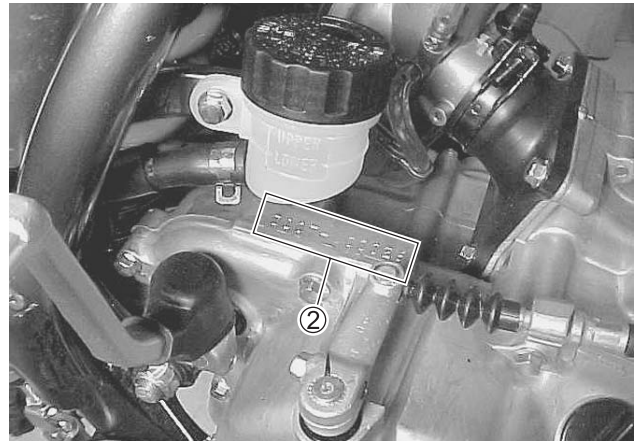


SERIAL NUMBER LOCATION



The frame number ① is stamped on the steering head. The engine serial number ② is stamped on the right side of the crankcase assembly.

Write down the serial numbers here for your future reference.

| | |
|-----------|--|
| Frame No. | |
|-----------|--|

| | |
|------------|--|
| Engine No. | |
|------------|--|