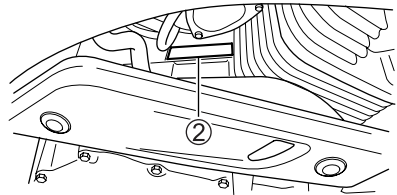
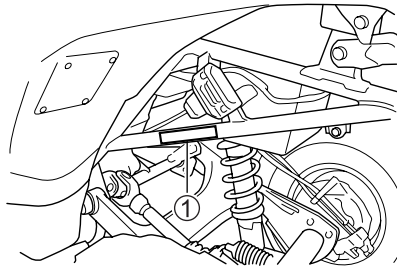


CONSUMER INFORMATION

SERIAL NUMBER LOCATION



You need to know the frame and engine serial numbers to get title documents for your ATV. You also need these numbers to help your dealer when you order parts.

The frame number ① is stamped on the left side of the frame as shown in the illustration. The engine serial number ② is stamped on the right side of the crankcase assembly.

Write down the serial numbers here for your future reference.

Frame No.:

Engine No.: