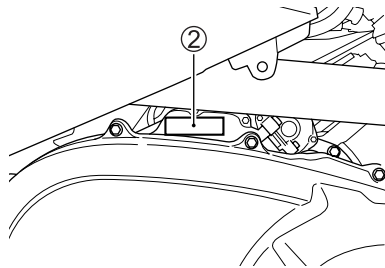
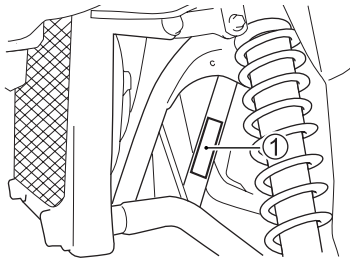


CONSUMER INFORMATION

SERIAL NUMBER LOCATION



You need to know the frame and engine serial numbers to get title documents for your ATV. You also need these numbers to help your dealer when you order parts.

The frame number ① is stamped on the right side of the frame. The engine serial number ② is stamped on the right side of the crankcase assembly.

Write down the serial numbers here for your future reference.

Frame No.:

Engine No.:

INFORMATION REGARDING EC-DIRECTIVE (For European countries)

Noise level

Noise levels of this ATV measured under related EC Directives are as follows:

Regulation	Condition	Noise level
97/24/EC Chapter 9	In motion	83 dB(A)
	Stationary	90 dB(A)
77/311/EEC	At drivers ear	81 dB(A)

Vibration

Vibration levels of this ATV measured under the related in-house engineering standard according to the requirements of EC Directive are as follows:

Item	At	Vibration level
Weighted root mean square acceleration	Handle grip	9.8 m/s ²
	Body	3.3 m/s ²